

WW RM-Scenery packs

I was looking for some garden huts and found some in Richard's collections which I decided to do quick re-skins for. Well, I forgot to stop and did most of the models from the three packs. Some of them I just lightened, some I did new textures for, and the housing I turned into brick buildings – more suited to Southern and Eastern England. They are just quick re-skins – and you can probably improve them – feel free, but I suggest you work from the original Richard Maxted packs rather than these. If you do so and would like me to host them then contact me through the Contacts page on my website: <http://www.wotawallysbits.co.uk/>

The packs will install to “Wotawally\Scenery\” and in the scenery editor you will find the items in Housing, Commercial, Stations and Miscellaneous - all with the prefix “WW_”

Colin Green (Wotawally) January 2018

From Richard's Read-Me document in the original packs

Your Rights

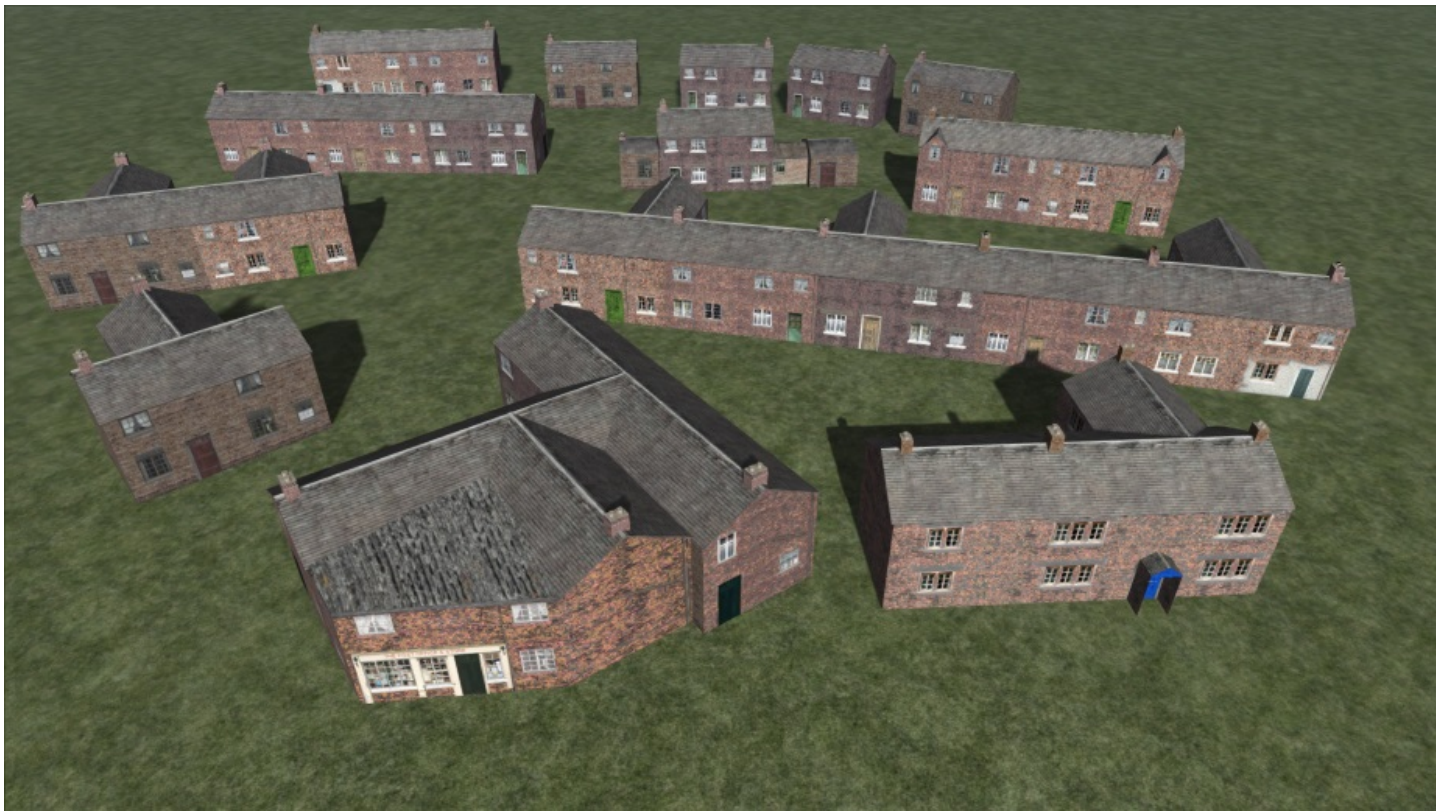
Any of my assets are hereby cast amongst you all to ever roam free. Basically I no longer have any ownership of these but if you do modify them please pop the mods in your own directory so other people using the defaults don't get affected. You may mod, reverse engineer, reskin, rename and include them in your route with out any further need to ask permission. No commecial or charity routes (sales of any kind) without contacting me first via UKGA

Richard Maxted *April 2014*

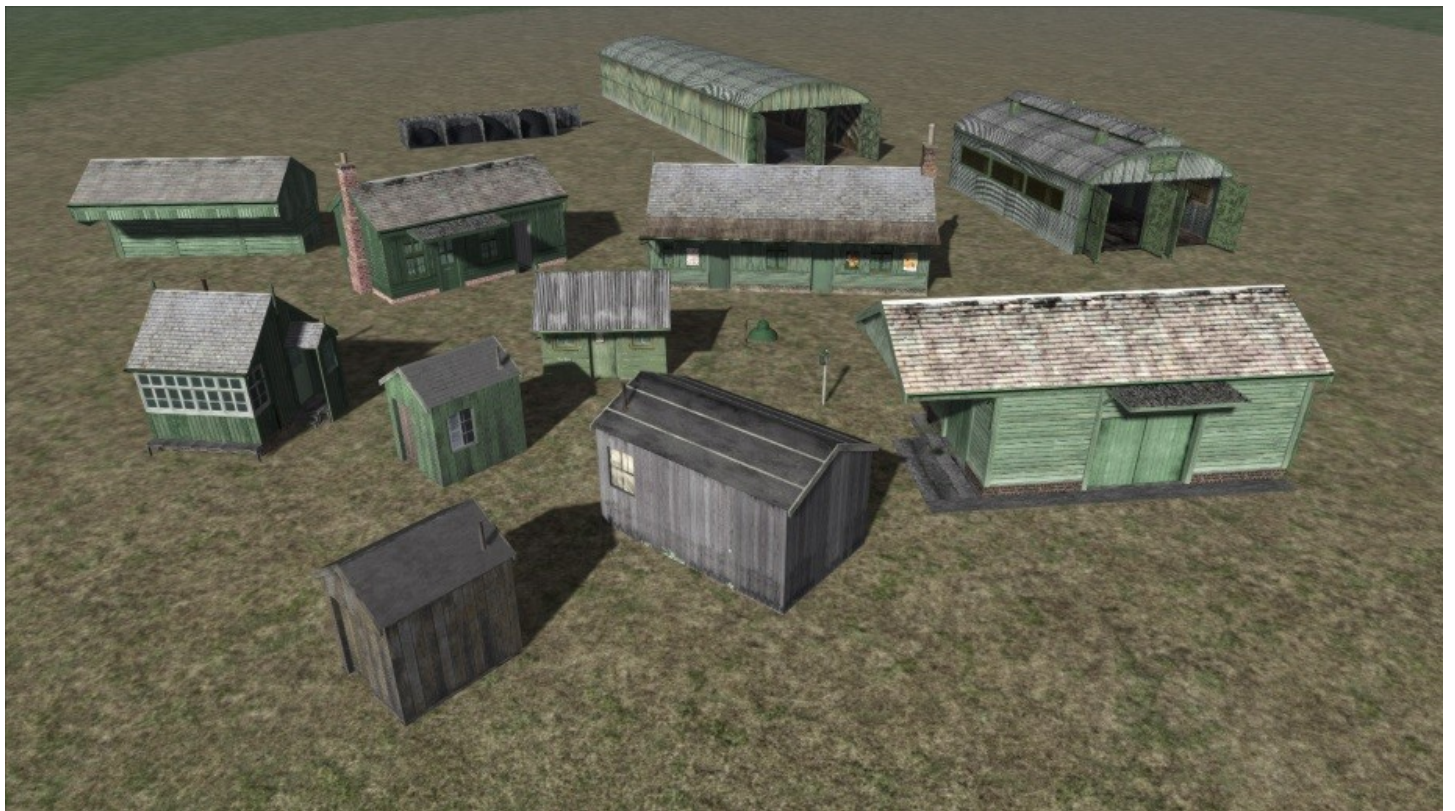
You have the same rights regarding these re-skin packs.



Commercial



[Housing](#)



[Railway](#)